

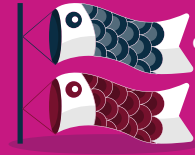


8D7N **Honshu** Delight



CHAN BROTHERS GROUP OF COMPANIES

8天7夜 **本州** 欢乐之旅 (WJP8HS)



SCAN FOR MORE INFORMATION



CHAN BROTHERS GROUP OF COMPANIES



Chan's World Holidays Pte Ltd
452 North Bridge Road, #07-00,
Chan Brothers Building,
Singapore 188733
(opposite Singapore National Library)



cwh@chanbrothers.com.sg



www.ChansWorld.com



+65 97596053



6206 1797



chansworldholidays



chansworld_holidays

TA2146

(WJP8HS)

8D7N HONSHU Delight

8天7夜 本州欢乐之旅



Mt Fuji

DAY 1 SINGAPORE – OSAKA

Assemble at Singapore Changi Airport for your flight to **Osaka**. Check into the hotel upon arrival.

Note: The itinerary will arrange a transfer flight to Osaka. Japan Airlines (JL flights) will transfer in Tokyo (domestic flight to Kansai Airport); Cathay Pacific (CX flights) will transfer in Hong Kong; China Airlines (CI flights) will transfer in Taipei. Flight times are subject to official schedules.

DAY 2 OSAKA

Breakfast/Lunch/Dinner

After breakfast, you will experience the famous **Sagano Train**, take the train from Kameoka Stop to Arashiyama Stop, you can enjoy the scenery of Arashiyama and Katsugawa. In spring, train travels in the embrace of cherry blossoms. In the summer, watch the slowly flowing river accompanied by the chirping of cicadas. In autumn, enjoy the red leaves falling slowly outside the window, in winter, you can enjoy the wonderful snow scene. After getting off the Train, visit the **Bamboo Forest Arashiyama** where the movie "SAYURI" filmed settled. Then proceed to **Togetsukyo Arashiyama**, to enjoy a beautiful view of the western hills, and taste the essence of Japanese aesthetic tradition. After come back to downtown of Osaka, visit the **Shinsaibashi Dotonbori**, the largest shopping district in Osaka. Known as the "Japanese kitchen", here you can taste the special food and feel the fun of shopping.

DAY 3 OSAKA

Breakfast, No tour guide and car

After breakfast, spend the day free at leisure.

DAY 4 OSAKA – NARA – KYOTO – HAMAMATSU

Breakfast/Lunch/Dinner

After breakfast, experience hand-feeding of Deers in **Nara Sika Deer Park** where raised a large number of deer. Then visit the **Todaji Temple**, the temple is a national treasure of Japan and was listed as a World Heritage site in 1998. Proceed to **Kiyomizu Temple**, visit the famous **Shimizu Stage**. Go back to hotel and take a good rest after visit.

DAY 5 HAMAMATSU – MOUNT FUJI NATIONAL PARK

Breakfast/Dinner

After breakfast, spend your morning at Japan's largest outlet mall "Gotemba Outlet", Around 200 stores selling famous domestic and foreign brands inside the mall, you can feel the atmosphere of the North American city streets and experience the fun of shopping. Then take a far view of Mount Fuji at **Lake Kawaguchiko Oishi Park**, here has the most complete view of Mount Fuji. On a cloudless sunny day, the entire top of Mount Fuji will be completely reflected in the blue lake, making Kawaguchiko like a

special vanity mirror of Mount Fuji. Proceed to **Shimoyoshida**, this town known as the ladder to Mount Fuji. Putting the Japanese street and Mount Fuji in the same lens, and take some beautiful photos at photo stop.

DAY 6 FUJI – KAMAKURA – TOKYO

Breakfast/Lunch

After breakfast, proceed to Hakone Port for a Hakone Sightseeing Cruise to Moto-Hakone Port. Once ashore, visit the **Narukawa Art Museum**, where has a collection of more than 4,000 modern Japanese paintings and masterpieces. After visit, proceed to **KAMAKURA**, take photos at **Kamakura - Koko - Mae**, then do some shopping and having some local cuisine at **Kamakura Komachi Dori**.

DAY 7 TOKYO

Breakfast, No tour guide and car

After breakfast, spend the day free at leisure.

DAY 8 TOKYO – SINGAPORE

Breakfast

After breakfast, transfer to the airport for your flight back to Singapore.

Note: Japan Airlines (JL flights) is direct flight back to Singapore; Cathay Pacific (CX flights) will transfer in Hong Kong; China Airlines (CI flights) will transfer in Taipei. Flight times are subject to official schedules.

第1天

新加坡 - 台北 - 大阪

新加坡樟宜机场集合，后搭乘飞往大阪的航班。抵达后，我们将前往酒店并办理入住手续。

注：本行程均需转机前往大阪。日本航空(JL航班)将在东京转机(搭乘日本内陆航班)；国泰航空(CX航班)将在香港转机；中华航空(CI航班)将在台北转机。航班时间以公告时间为准。

第2天

大阪

早/午/晚餐

抵达大阪关西机场后前往岚山，乘坐【嵯峨小火车】从(龜岡站-嵐山站)深入景区核心地带，沿途可以欣赏岚山景色，游览岚山最有名的景点曾经拍摄过艺妓回忆录的「竹林小径」，随后前往【岚山渡月桥】欣赏西部丘陵的美景，优美桥身展现出日本美学传统精髓的美感。回到大阪市中心后，参观心斋桥·道顿堀，这是大阪最大的购物区，被称为“日本的美食街”，您可以品尝特色美食，感受购物的乐趣。

第3天

大阪

早餐

自由活动一整天(无车和导游)

第4天

大阪 - 奈良 - 京都 - 浜松

早/午/晚餐

享用完早餐后，我们将前往奈良鹿公园，体验亲手喂食这里养成的众多鹿群。随后，我们将参观东大寺，这座寺庙被誉为日本的国宝，于1998年被列为世界遗产。接着，我们将前往清水寺，探访其著名的清水舞台。游览结束后，返回酒店。

第5天

浜松 - 富士山国家公园

早/晚餐

早餐后，您将在日本最大的Outlet购物中心“御殿场Outlet”度过上午，这里有约200家店铺销售国内外知名品牌，您可以感受北美城市街道的氛围，并享受购物的乐趣。随后前往河口湖大石公园，远眺富士山，这里能欣赏到富士山最完整的景观。在晴朗无云的天气下，整个富士山顶部将完全倒映在蓝色湖面上，使得河口湖仿佛富士山的特别镜子。然后前往下吉田，这个被称为通往富士山的入口的小镇。将日本街道和富士山放在同一视角下，并在拍照点拍摄一些美丽的照片。

第6天

富士 - 镰仓 - 东京

早/午/晚餐

早餐后，前往箱根港搭乘箱根观光游船前往元箱根港。到达后，参观成川美术馆，这里收藏有超过4000幅现代日本绘画和名家作品。参观结束后，前往镰仓，在镰仓高校前站拍照留念，然后在镰仓小町通购物，品尝当地美食。

第7天

东京

早餐

自由活动一整天(无车和导游)

第8天

东京 - 新加坡

早餐

早餐后，专车送往机场搭乘国际航班返回新加坡。

注：搭乘日本航空(JL航班)为直飞航班返回新加坡；国泰航空(CX航班)将在香港转机；中华航空(CI航班)将在台北转机。航班时间以公告时间为准。

HIGHLIGHTS

OSAKA

- Togetsukyo Arashiyama
- Bamboo Forest Arashiyama
- Shinsaibashi
- Dotonbori

NARA

- Nara Sika Deer Park
- Todaji Temple

KYOTO

- Kiyomizu Temple

FUJI

- Gotemba Outlet
- Lake Kawaguchiko Oishi Park
- Shimoyoshida - Hikawa Clock Shop
- Narukawa Art Museum
- Lake Ashi

KAMAKURA

- Kamakura - Koko - Mae
- Kamakura Komachi Dori

TOP CLASS ACCOMMODATION

- Local 4 stars throughout

EXCLUSIVE EXPERIENCE

- Sagano Train (Kameoka Stop - Arashimaya Stop)
- Hakone Sightseeing Cruise (Hakone Port Town - Moto-Hakone Port)

REMARKS

Revisions, if any, in itinerary are subject to the Company's Terms and Conditions, a copy of which is available at www.Chansworld.com/PackageTourTnCs. In particular, the Customer is requested to note the following:

- Itinerary may be subject to change due to circumstances beyond the Company's control.
 - Accommodation in designated cities is subject to room availability.
 - Sequence of itinerary may be subject to change.
 - Different tour groups may be merged.
- Proposed changes, if any, that are not accepted will be subject to the refund provisions set out in the Terms and Conditions.



Kyoto

JAPAN

