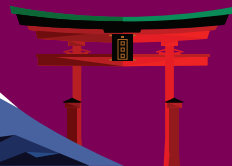


7D5N Tokyo Dream and Disneyland Delight (WJP7DL)



CHAN BROTHERS GROUP OF COMPANIES

7天5夜 东京与迪士尼梦幻之旅



SCAN FOR MORE INFORMATION

MT. FUJI



Chan's World Holidays Pte Ltd
 452 North Bridge Road, #07-00,
 Chan Brothers Building,
 Singapore 188733
 (opposite Singapore National Library)



cwh@chanbrothers.com.sg



www.ChansWorld.com



+65 97596053



6206 1797



chansworldholidays



chansworld_holidays

TA2146

(WJP7DL)

7D5N TOKYO Dream and DISNEYLAND Delight

7天5夜 东京与迪士尼梦幻之旅



Tokyo Disneyland



Mt Fuji

DAY 1 SINGAPORE – TOKYO

Meal On Board

Gather at Singapore Changi Airport and board the flight to **Tokyo**. Upon arrival in Tokyo, proceed to the hotel and enjoy free time in the city.

DAY 2 TOKYO – MOUNT FUJI NATIONAL PARK

Breakfast/Lunch/Dinner

Upon arrival, you will head to **Mt. Fuji National Park** to visit the **Mt. Fuji World Heritage Centre**, which features a 15-meter-diameter paper replica of Mt. Fuji. Afterward, continue to the **Mt. Fuji 5th Station** to admire its magnificent views. Mt. Fuji is an active volcano and the highest peak in Japan, known as one of Japan's "Three Holy Mountains." It is a scenic spot and historical site, listed as a UNESCO World

Heritage Cultural Site in 2013. We will spend the night at a hotel in the Mt. Fuji area.

Note: Access to the 5th Station of Mt. Fuji is subject to weather conditions.

DAY 3 MOUNT FUJI NATIONAL PARK – TOKYO

Breakfast/Lunch/Dinner

After breakfast, you will head to the renowned **Gotemba Premium Outlets**, a large shopping center featuring a wide range of international brands and specialty stores offering the latest fashion trends. After shopping, you will enjoy a delicious lunch and then proceed back to Tokyo. Next, visit the **Tokyo Skytree Observatory**. This tower is not only the tallest building in Japan but also one of the world's most famous tourist attractions. Standing at 634 meters, Tokyo Skytree has been an iconic landmark of Tokyo since its completion in 2012. From the observatory, you can enjoy breathtaking panoramic views of the city, and on clear days, even catch a glimpse of Mt. Fuji, providing a stunning visual experience.

DAY 4 TOKYO DISNEYLAND

Breakfast

Today's itinerary takes you to **Tokyo Disneyland**, where you will enter a timeless world of magic and fantasy. Get close to your favourite cartoon characters, enjoy

spectacular entertainment shows, and experience a variety of thrilling rides. Your full-day pass allows you to explore all the exciting attractions in the park. In the evening, you will also witness a captivating fireworks display, marking the perfect end to a day full of joy and memorable experiences. Afterward, return to the hotel to rest and conclude a day brimming with happiness and cherished memories.

DAY 5 TOKYO FREE AND EASY

Breakfast

After breakfast, you are free to explore Tokyo's major sightseeing spots on your own (without guide or transportation services).

DAY 6 TOKYO FREE AND EASY – TOKYO AIRPORT

Breakfast

After breakfast, you are free to explore Tokyo's major sightseeing spots on your own (without guide or transportation services). Return to Tokyo Airport to catch your flight back to Singapore at the designated time.

DAY 7 ARRIVAL SINGAPORE

Today, you will arrive at Singapore Changi Airport, marking the end of your vibrant and enriching Tokyo trip!

第1天 新加坡 - 东京

机上用餐

在新加坡樟宜机场集合并搭乘前往东京的航班。抵达东京后前往酒店，享受在东京市区的自由时间。

第2天 东京 - 富士山国家公园

早/午/晚餐

抵达后，您将前往富士山国家公园，参观富士山世界遗产中心，中心内有一个直径15米的纸质富士山复制品。随后，继续前往富士山五合目，欣赏富士山的壮丽景色。富士山是活火山，也是日本最高的山峰，被誉为日本的“三大神山”之一。它是日本的名胜景点和历史遗址之一，2013年被列为联合国教科文组织世界文化遗产。本日，我们将在富士山地区的酒店过夜。

注：前往富士山五合目需视天气情况而定。

第3天 富士山国家公园 - 东京

早/午/晚餐

早餐后，您将前往著名的御殿场奥特莱斯，这是一个大型的购物中心，汇集了众多国际知名品牌和特色店铺，提供最新的时尚潮流商品。从奢侈品到日常用品，御殿场奥特莱斯是一站式的购物天堂，适合所有喜爱购物的人们。购物结束后，您将享用丰盛的午餐，随后启程返回东京，前往东京晴空塔观景台。这座塔不仅是日本最高的建筑物，还是世界著名的观光胜地之一。晴空塔高达634米，自2012年完工以来，便成为东京的标志性建筑。登上观景台，您可以俯瞰整个东京市区的壮丽景观，天气晴好时甚至能够远眺富士山，体验到震撼的视觉享受。

第4天 东京迪士尼乐园

早餐

本日行程将前往东京迪士尼乐园，进入一个充满魔法与幻想的永恒世界。与您喜爱的卡通角色亲密接触，欣赏精彩的娱乐表演，体验各种刺激的冒险游乐设施。您的全日通行证让您可以畅玩乐园内的所有精彩项目。傍晚时分，您还将欣赏到令人陶醉的烟花表演，为这一天的美好体验画上圆满的句号。随后，返回酒店休息，结束充满欢乐与回忆的一天。

第5天 东京自由行

早餐

早餐后，您可自由前往东京各大观光景点(无导游、交通服务)

第6天 东京自由行 - 机场

早餐

早餐后，您可自由前往东京各大观光景点(无导游、交通服务)。直到导游告知的集合时间，一同搭乘接驳车前往东京机场返回新加坡。

第7天 抵达新加坡

抵达新加坡。本日抵达新加坡樟宜机场，结束丰富多彩的东京之旅！

HIGHLIGHTS

TOKYO

- Mountain Fuji 5th Station
- Gotemba Premium Outlets
- Tokyo Skytree Observatory Deck
- Tokyo Disneyland

TOP CLASS ACCOMMODATION

- 4 Nights in Tokyo city hotel
- 1 Night in Mountain Fuji area hotel

INCLUDED MEALS

- 5 Breakfasts, 2 Lunches, 2 Dinners

CURATED HIGHLIGHTS

- Mountain Fuji 5th Station ~ Enjoy Mt. Fuji scenic view
- Enjoy your time in Tokyo Disneyland
- Tokyo Skytree Observatory Deck

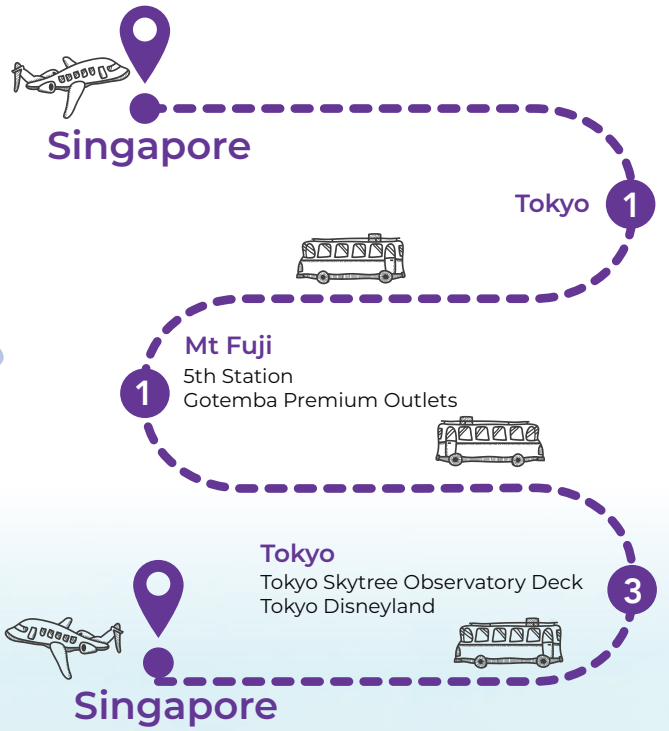
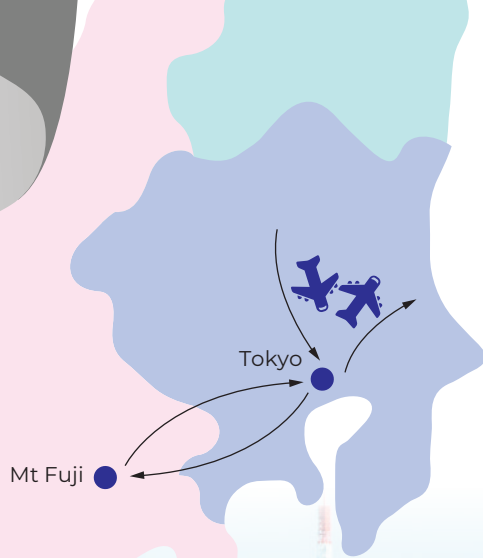
REMARKS

Revisions, if any, in itinerary are subject to the Company's Terms and Conditions, a copy of which is available at www.Chansworld.com/PackageTourTnCs. In particular, the Customer is requested to note the following:

- Itinerary may be subject to change due to circumstances beyond the Company's control.
- Accommodation in designated cities is subject to room availability.
- Sequence of itinerary may be subject to change.
- Different tour groups may be merged. Proposed changes, if any, that are not accepted will be subject to the refund provisions set out in the Terms and Conditions.



JAPAN



Tokyo Skytree Observatory Deck