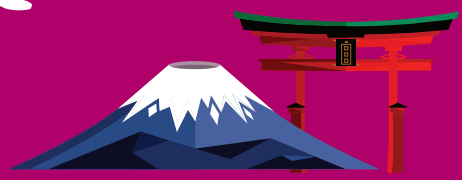


7D6N

Tokyo GO!



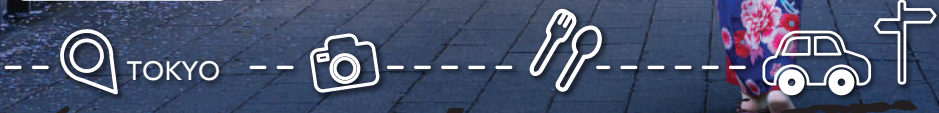
CHAN BROTHERS GROUP OF COMPANIES



With Mount Fuji (WJP7EP)



SCAN FOR MORE INFORMATION



CHAN BROTHERS GROUP OF COMPANIES

Chan's World Holidays Pte Ltd
452 North Bridge Road, #07-00,
Chan Brothers Building,
Singapore 188733
(opposite Singapore National Library)

cwh@chanbrothers.com.sg

www.ChansWorld.com

+65 97596053

6206 1797

[chansworldholidays](https://www.facebook.com/chansworldholidays)

[chansworld_holidays](https://www.instagram.com/chansworld_holidays)

TA2146

(wJP7EP)

7D6N TOKYO GO With Mount Fuji



Mt Fuji



Rainbow Bridge

📍 DAY 1 SINGAPORE – TOKYO

Assemble at Singapore Changi International Airport for your flight to **Tokyo**. Upon arrival, head to hotel.

📍 DAY 2 TOKYO – MOUNT FUJI

Breakfast/Lunch/Dinner

After breakfast, head to **Mount Fuji 5th Station** if weather permitting, where you'll enjoy breathtaking views from this iconic location. Next, experience the **Fuji Panorama Ropeway** that offering stunning vistas of the surrounding landscape. You will then visit **Tenjoyama**



Sensoji Temple

Park, renowned for its panoramic scenery. Next, our journey continues to **Lake Kawaguchiko**. Here, you can enjoy a superb view of both the serene lake and majestic Mount Fuji. This combination of natural beauty and picturesque settings makes for an unforgettable day of exploration and relaxation.

📍 DAY 3 MOUNT FUJI – TOKYO

Breakfast/Lunch/Dinner

Start your day by shopping at Japan's largest outlet mall "**Gotemba Outlet**". With over 200 speciality stores selling anything from fashion to sports, household and luxury goods, feel free to release the shopaholic in you and let those purse strings come loose! Then, you will visit **Yokohama Chinatown**, the largest Chinatown in Japan, known for its vibrant atmosphere and delicious cuisine, providing a delightful cultural experience. Next, proceed to **Shibuya**, a center for youth fashion and culture, and its streets are the birthplace to many of Japan's fashion and entertainment trends. You must visit **Shibuya Scramble Crossing** that referred to as the world's busiest pedestrian crossing.

DAY 4 TOKYO

Breakfast/Lunch/Dinner

This morning, visit **Ameyokocho**, a bustling shopping street in Tokyo's Ueno district, famous for its diverse market stalls, street food, and vibrant atmosphere. Next, visit **Sensoji Temple**, an ancient Buddhist temple with more than 1300 years of history, located in Asakusa, Tokyo, Japan. Next, pick-up souvenirs at the nearby **Nakamise** shopping street, a walkway leading to the temple that is lined with crafts, trinkets and other cultural curios. Thereafter, take a **water bus from Sensoji Temple**, passing Tokyo's famous landmarks such as Fuji TV and Rainbow Bridge to **Odaiba Divercity Tokyo Plaza**. Have some free leisure time for shopping, enjoying delicacies, etc. Don't forget to take photo with the real scale Gundam model.

DAY 5 TOKYO

Breakfast

Spend the whole day at own leisure.

Recommended Attractions:

- **[Warner Bros. Studio Tour Tokyo-The Making of Harry Potter]** Follow in the footsteps of Harry Potter and explore the wonders of the wizarding world - right here in Tokyo! Asia's first and only Harry Potter Studio! Go behind the scenes and discover the filmmaking secrets of Harry Potter and the movies in this new cinematic themed park.

- **[Tokyo Disneyland]** Tokyo Disneyland is known as the #1 amusement park in Asia. Enter a timeless world of magic and fantasy as you step into Tokyo Disneyland. Get cozy with your favorite characters, watch fabulous entertainment shows and enjoy adventurous thrilling rides.

DAY 6 TOKYO

Breakfast

Spend the whole day at own leisure.

Recommended Attractions:

- **[Akihabara]** From Harajuku to Aoyama Avenue, Akihabara is a tree-lined boulevard known as the "Paris" of Japan, with elegant avenues, open chic coffee shops and restaurants, and high fashion shops.
- **[Ginza]** A major business district in center District of Tokyo, known as "the most expensive place in Asia", symbolizing Japan's prosperity and offering famous brands all over the world for its high-end shopping is regarded as "shopper's paradise".

DAY 7 TOKYO - SINGAPORE

Breakfast

After breakfast, transfer to airport for your flight home.

HIGHLIGHTS

MOUNTAIN FUJI

- 5th Station
- Tenjoyama Park
- Lake Kawaguchi

YOKOHOMA

- Chinatown

TOKYO

- Shibuya
- Ameyokocho
- Sensoji Temple
- Nakamise Street
- Odaiba Divercity

TOP CLASS ACCOMMODATION

- Local 4★ hotel

EXCLUSIVE EXPERIENCE

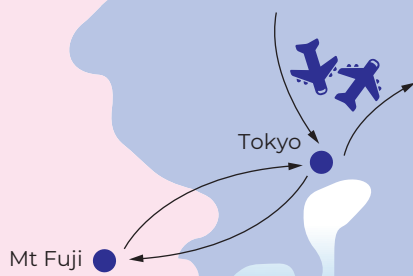
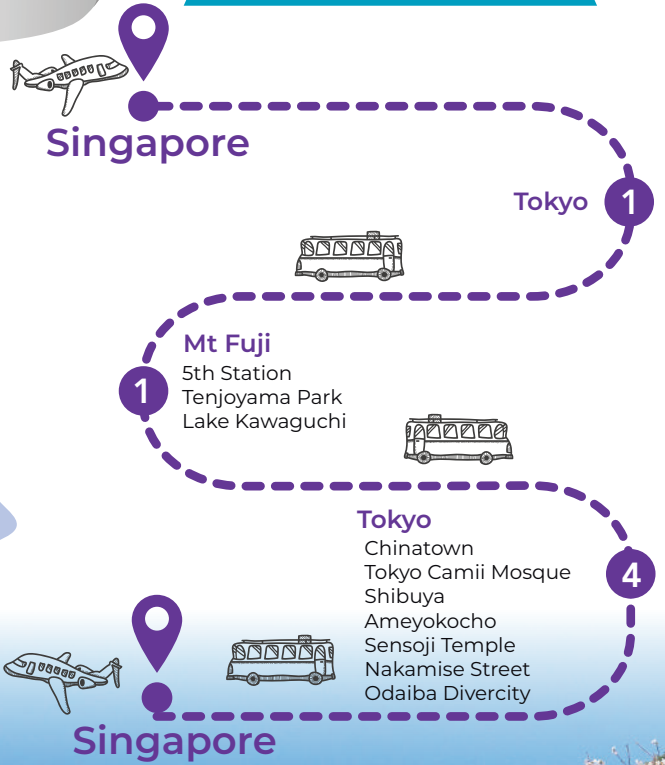
- Tokyo Mizube Line Tour (From Sensoji Temple to Odaiba Marine Park)

REMARKS

Revisions, if any, in itinerary are subject to the Company's Terms and Conditions, a copy of which is available at www.Chansworld.com/PackageTourTnCs. In particular, the Customer is requested to note the following:

- Itinerary may be subject to change due to circumstances beyond the Company's control.
- Accommodation in designated cities is subject to room availability.
- Sequence of itinerary may be subject to change.
- Different tour groups may be merged. Proposed changes, if any, that are not accepted will be subject to the refund provisions set out in the Terms and Conditions.

JAPAN



Mt Fuji